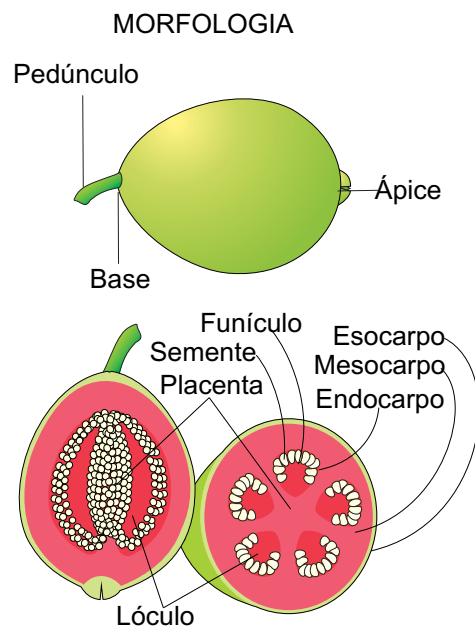
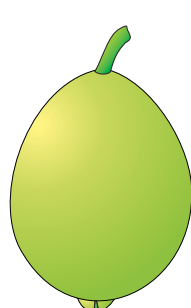


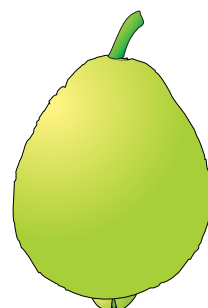
PRINCIPAIS VARIEDADES DE GOIABA COMERCIALIZADAS NA CEAGESP



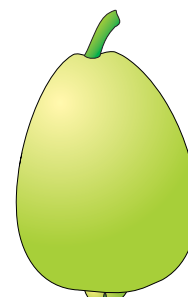
MBROGGEX



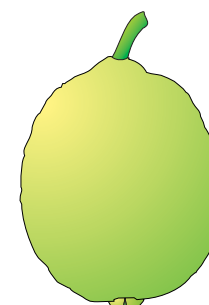
Pedro Sato
Lisa



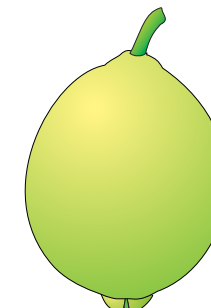
Pedro Sato
Rugosa



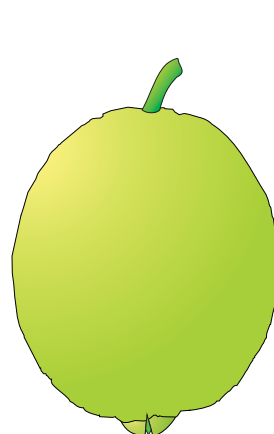
Paluma



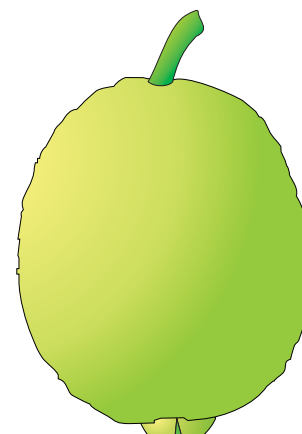
Kumagai Rugosa
Vermelha



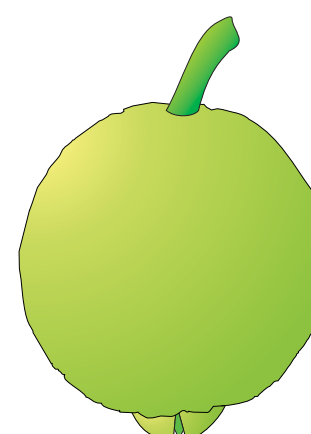
Kumagai Lisa
Branca



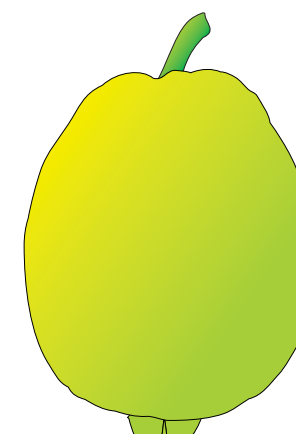
Cascuda de
Pariquera-Açu



Chinesa



Sassaoka



Tailandesa

Ilustrações: Bertoldo Borges Filho

Variedades	Formato	Cor da casca	Textura da casca	Cor da polpa
Pedro Sato	Oblongo a piriforme	Verde a amarela	Lisa a rugosa	Vermelha
Paluma	Oblongo levemente ovalado	Verde a amarela	Rugosa	Vermelha
Kumagai	Ovalado a arredondado	Verde a amarela	Lisa a rugosa	Vermelha e branca
Cascuda de Pariquera-Açu	Arredondado a oblongo	Verde a amarela	Rugosa	Vermelha
Chinesa	Oblongo	Verde a amarela	Rugosa	Vermelha e branca
Sassaoka	Achatado a globoso	Verde a amarela	Rugosa	Branca
Tailandesa	Oblongo	Verde a amarela	Rugosa	Vermelha