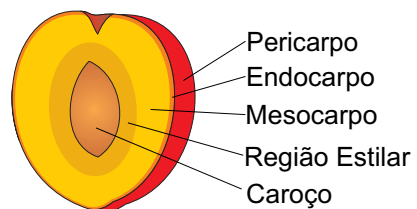
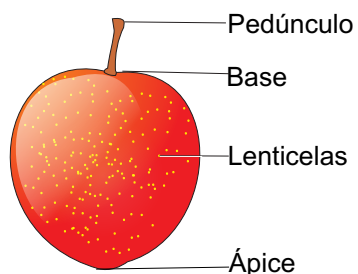
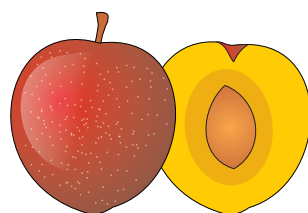


PRINCIPAIS VARIEDADES DE AMEIXA COMERCIALIZADAS NA CEAGESP

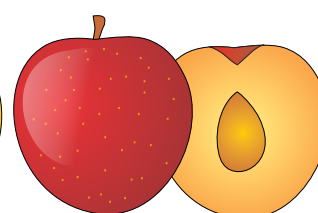
MORFOLOGIA



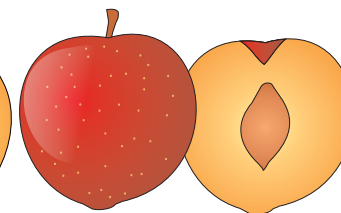
BORGES



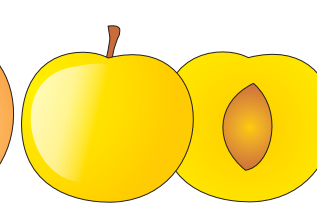
Reubennel
(Rubi Mel ou Rubi 1)



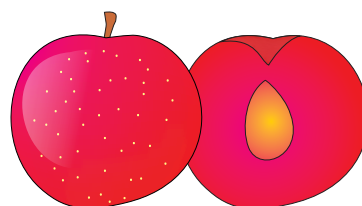
Harry Pickstone
(Rubi2)



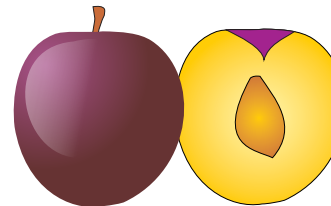
Letícia



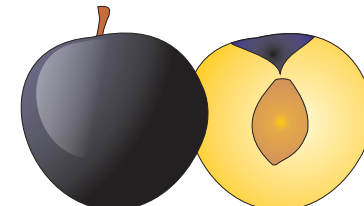
Gema de Ouro



Pluma7 (Carmesin)



Fortuna (Italiana)



Black Ambar

Ilustrações: Bertoldo Borges Filho

Variedades	Formato	Coloração da casca	Coloração da Polpa	Aderência do caroço	Sabor
Reubennel	Ovalado	Vermelha	Amarela	Semi-aderido	Doce
Harry Pickstone	Arredondado	Vermelha	Amarela	Semi-aderido	Doce-acidulado
Letícia	Ovalado	Vermelha	Amarela	Solto	Doce-acidulado
Gema de Ouro	Elíptico e achatado	Amarela	Amarela	Aderido	Doce
Pluma 7	Redondo	Vermelha	Sanguínea	Aderido	Agridoce e doce
Fortuna	Arredondado	Roxa	Amarela	Semi-aderido	Doce
Black Ambar	Redondo	Azulada	Amarela	Semi-aderido	Doce