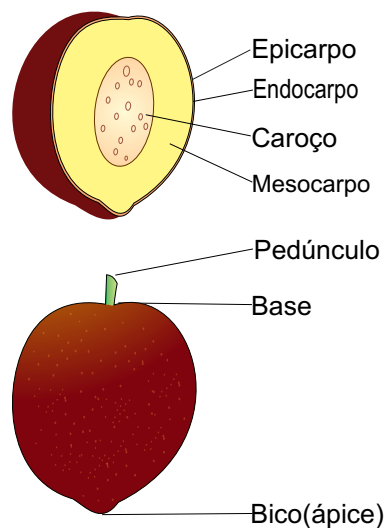
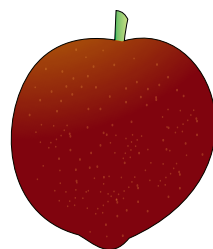


PRINCIPAIS VARIEDADES DE NECTARINA COMERCIALIZADAS NA CEAGESP

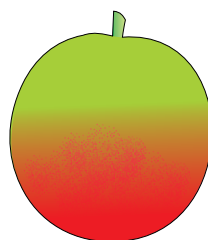
MORFOLOGIA



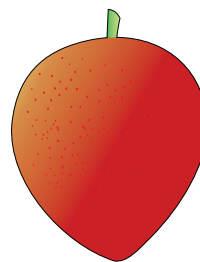
BORGES



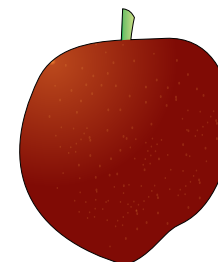
Colombina



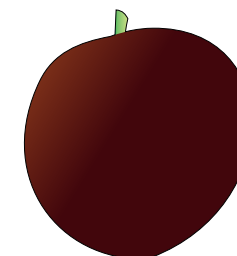
Josefina



Sunripe



Sun Raycer



Sunred ou Rubrosol

Ilustrações: Bertoldo Borges Filho

Variedades	Formato	Coloração da casca	Coloração da polpa	Caroço
Colombina	Globoso	Vermelho-escura	Amarelada	Solto
Josefina	Globoso	Vermelho-escura sobre fundo amarelo-esverdeada	Branca	Solto
Sunripe	Globoso oblongo	Avermelhada	Amarelada	Solto
Sunred ou Rubrosol	Globoso	Vermelha	Amarelada	Semi solto
Sun Raycer	Globoso	Vermelha	Amarelada	Preso